

EVERBRITE™

11492 Sunrise Gold Circle ♦ Rancho Cordova, CA 95742
Phone 916-852-0200 or 800-304-0566 ♦ Email: info@EverbriteCoatings.com
www.RenewStorage.com

HOW TO REFINISH METAL ROLL-UP DOORS TO LOOK NEW AGAIN AND PROTECT THE METAL FROM SUN, SALT AIR, ACID RAIN AND OTHER DAMAGING ELEMENTS.

How-To VIDEO AVAILABLE AT www.RenewStorage.com

Restoring metal buildings or doors is a two step process. First, clean the surface. Second, apply Everbrite Protective Coating to renew the color and luster of the metal. Everbrite will also protect metal from oxidation, corrosion, acid rain, chalk, rust and more.

STEP 1 - CLEANING THE SURFACE

The goal in cleaning the surface is not only to remove the dirt and grime, but also to remove all the chalky oxidation, wax or grease that may be on the surface so the coating can adhere properly. Everbrite needs to be applied to a completely **clean and dry** surface.



HOW TO TO CLEAN OFF CHALKY OXIDATION

Removing the chalky oxidation is simple and easy to do. This is an extremely important step. All chalk and oxidization **MUST** be removed. A typical 8' x 8' large door can be completely de-oxidized in 20 to 30 minutes. It is **VERY IMPORTANT** to remove all chalk & oxidation from metal to be restored. This step will also remove road grime, dirt & marks. If the doors are extremely dirty, you may want to wash off the dirt, cobwebs & dust first.

A bucket of plain water, Prep Pads and microfiber towels are all that are required for this step. Wet the Prep Pad with plain water. Start at the top and scrub across each rib – it is not necessary to press hard. Use long strokes and go back & forth across each rib until the chalk is scuffed off and then wipe the residue off with your wet microfiber cloth. Rinse out the pad in water often. When the entire cloth has chalk on it, rinse in clean water and continue. This will ensure that all chalk and oxidation is removed.

Prep Pads are necessary to remove the oxidation evenly & will not scratch the paint. They are also great for removing marks and stains. If water beads up on the paint, use the Prep Pads to clean off the contaminants and break surface tension. *You may want to use several Prep Pads on top of each other to protect your fingers – especially when getting into the edges of the door.*



***Note: This blue door is not clean enough to coat. There is still uneven chalk on the door. **DO NOT** coat doors or other metal until they are **completely** clean.



A final wash with EZ Prep™ Cleaner, water & a brush will make sure that the doors will be completely clean. See directions below.

Be careful to not get water into the storage units. Most seals on storage doors will not keep water out if a stream is sprayed into the C channel. Aim the water away from the sides of the door & avoid spraying water up onto the top of the door. Rinsing the door by letting the water run down instead of spraying (see picture), helps to insure that there is less chance of water getting into the unit. Rinsing without a hard spray also reduces the chance that the dirt on top of the door will run down and contaminate your clean surface. **Powerwashing or pressure washing is not recommended** because of run-down and because the seals will not hold water out of the unit.



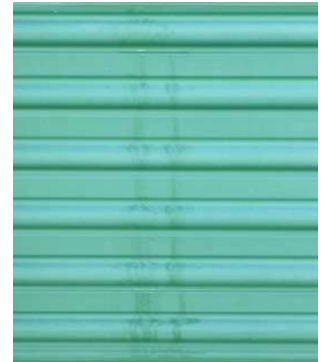
DIRECTIONS FOR FINAL WASH OF DOORS

1. Fill bucket with about 2 to 4 gallons of water.
2. Pour in about **1 oz. per gallon** of EZ Prep™ Cleaning Concentrate. Do not use too much cleaner or the solution will be difficult to rinse off.
3. Rinse the surface down with water. Do NOT apply soap solution on dry surface or it may streak.
4. Dip brush into soap solution and apply to surface working from top to bottom. Use uniform strokes and go all the way across the door if possible.
5. Rinse well. **DO NOT ALLOW SOAP TO DRY ON SURFACE.** Wash in sections if necessary.
6. Rinse THOROUGHLY until the water sheets off the door and there are no more bubbles or areas where the water beads up. If there are, rewash the door. Complete and thorough rinsing is very important.



Let dry and recheck door. **Make sure there is no cleaner or other contaminants left on the surface.** Check the rollup doors to make sure that no greasy dirt ran down on the door. If it has, the **residue must be removed before coating and can be cleaned off with clean microfiber and plain water.**

Here is a picture of greasy dirt that ran down from the top of the door. This needs to be wiped off. Wax, silicone or other contaminants can be removed with mineral spirits and clean cloths. If spirits are used, rewash the door.



Check to insure there are no contaminants by wiping the door with a wet cloth. **Water should not bead up on the surface. If it does, re-clean the surface.**

It is a good idea to rinse down the oxidation and soap residue from the cement or slurry coat so it does not stain or leave chalky residue.

****How to tell if the surface is clean enough to coat: The way that the surface looks wet with water after it is cleaned is the way it will look when it is coated. Remove ANY uneven chalky areas. ** Make sure water does NOT bead up on surface and there are NO bubbles when rinsing and the water sheets off.



Once the door is clean, the finish will still be dull. Application of Everbrite will bring out the color and luster of the metal.

When applying the coating, the **temperature** of the metal should not be extremely cold or you may get some runs before the coating is dry. The metal should not be very hot either. Put your hand on the door and if the temperature is too hot to leave your hand comfortably for 5 seconds, the metal is too hot. Work on the sun side on cold days and the shade side on hot days.



STEP 2 - APPLICATION OF EVERBRITE™ PROTECTIVE COATING.

TO WIPE EVERBRITE ON THE SURFACE

Materials Needed: ► Clearcoat Applicator ► Application pan. *A metal paint pan or the throwaway aluminum loaf pans work well.* ► Nitrile or chemical protective gloves to protect your hands. *(Rubber gloves will get sticky when exposed to solvents)*

1. Put tarp down if working on slurry or blacktop to protect it from the coating if it is spilled.
2. Pour Everbrite™ into clean, dry paint pan on the tarp. **DO NOT DILUTE EVERBRITE™ WITH ANYTHING ELSE.**
3. Dip the applicator **completely** into the Everbrite™ in the application pan. Squeeze out just the excess. Applicator should not be dripping. If you get drips or runs on the surface, gently wipe them out with your applicator.
4. Wipe the Everbrite™ on the surface working from side to side. Do not press hard. Pad should glide smoothly, when it starts sticking, dip applicator pad in Everbrite™ again.
5. Any missed areas or thin areas can be touched up after 1st coat is dry to touch. Everbrite Aerosols can be used for touch-up or for getting in the edges.
6. **Two coats of Everbrite™ are strongly recommended.** Everbrite™ will blend to itself.

SPRAY INFORMATION

Spraying Everbrite™ is the easiest and most efficient way of application on larger areas. This will save hours & hours of labor. A small HVLP sprayer with a solvent resistant cup is an excellent investment for application. (Available for about \$100) Fill the quart cup and spray it onto the cleaned surface. The spray is adjustable. On roll-up doors, the best way to spray is side to side, overlapping the sprayed area, hitting each rib and covering the door completely from one side to the other. You can see the method on the training video online. Hold the sprayer about 3-4 inches from the surface. The best setting of the sprayer is a vertical fan for spraying side to side and horizontal for spraying up & down. **Two coats of Everbrite™ are recommended for long lasting results.** Pay special attention to the top of each rib where the sun does the most damage.



Clean up equipment with a solvent like xylene. Lacquer thinner or other solvents can also be used to clean the equipment. Check to make sure that your sprayer is solvent rated.

That's it. NO rubbing, NO buffing, Let dry & enjoy the beautiful, new looking, easy to maintain surface. Dirt and dust will not penetrate into the new finish and will be much easier to keep clean. Maintenance of your refinished doors is easy.